

INDENT No 874 PILOT STEAMER FOR BRISBANE.
STERNFRAME & RUDDER.

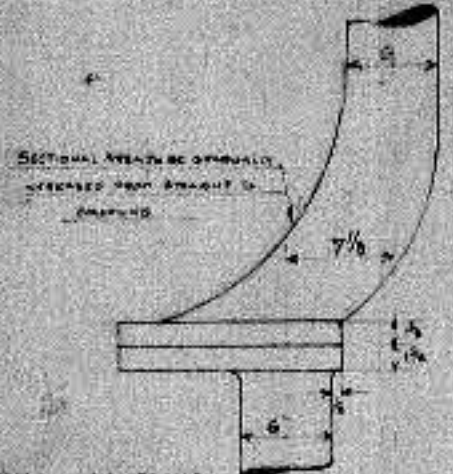
S.S. No 464

JOHN OXLEY.

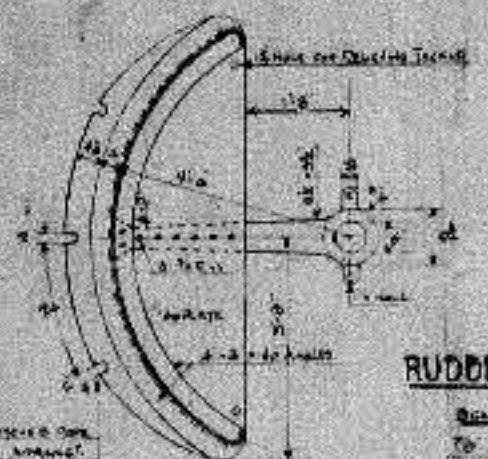
SCALE: 1/8" = ONE FOOT



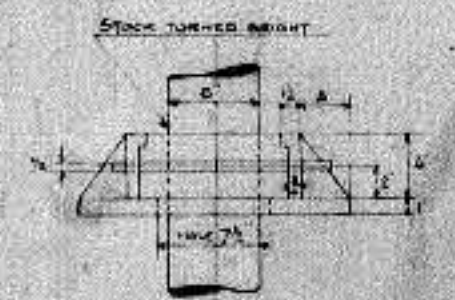
STERNFRAME & RUDDER FRAME TO BE OF BEST HAMMERED SHEAR IRON.
 GREAT CARE TO BE TAKEN IN BRASSING PARTS TO HAVE THEIR CENTRES
 PERFECTLY TRUE WITH ONE OR BOTH FORWARD FACINGS.



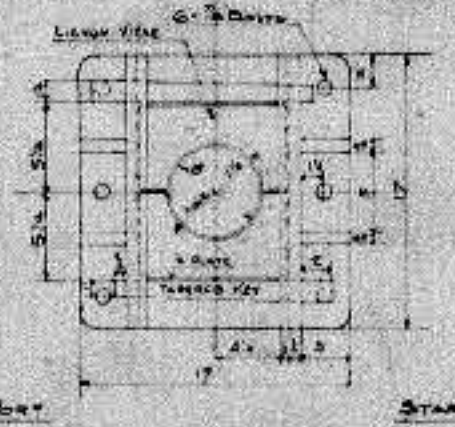
DETAIL OF COUPLING
 SCALE: 1/2" = 1 FOOT



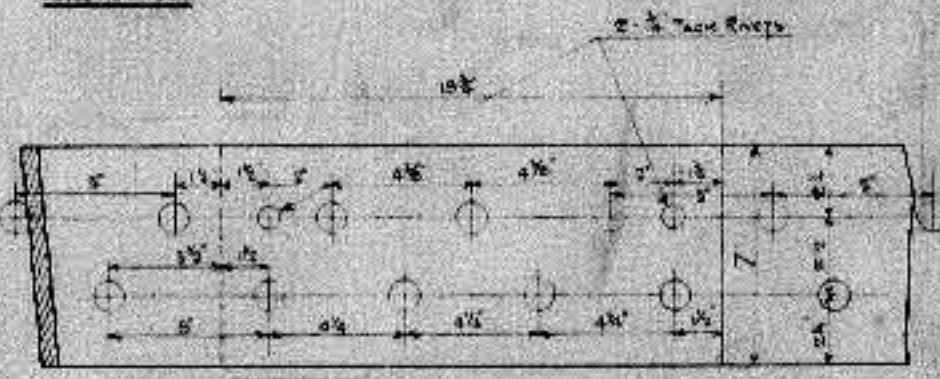
RUDDER QUADRANT
 SCALE: 1/4" = 1 FOOT



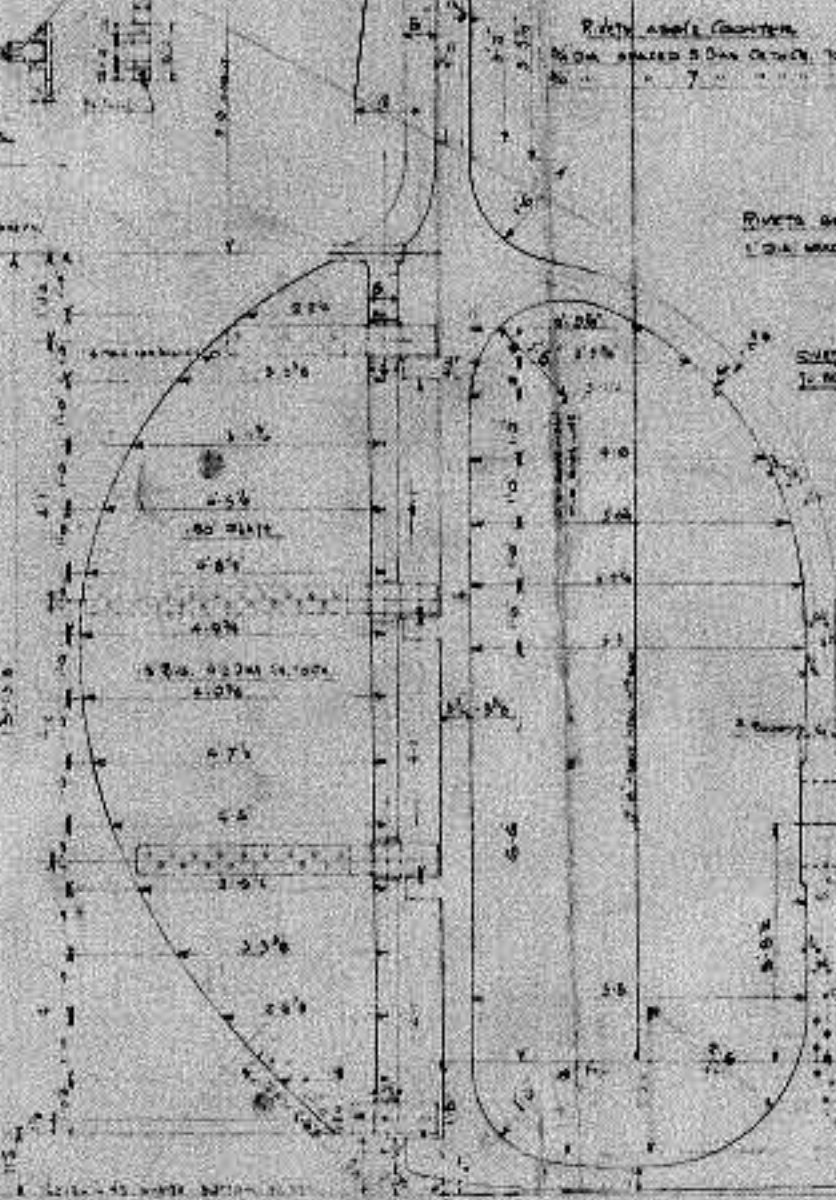
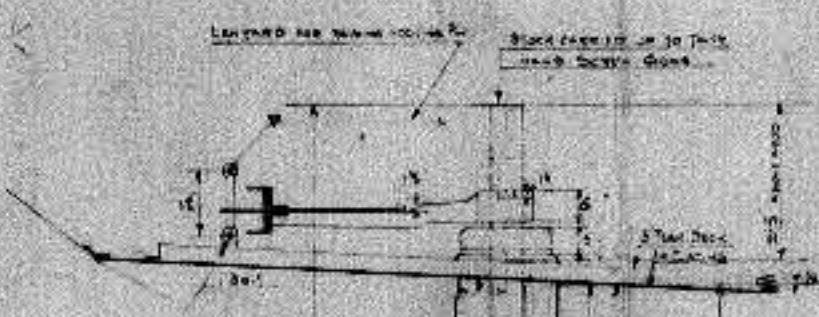
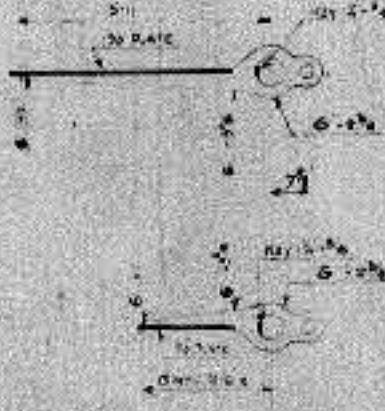
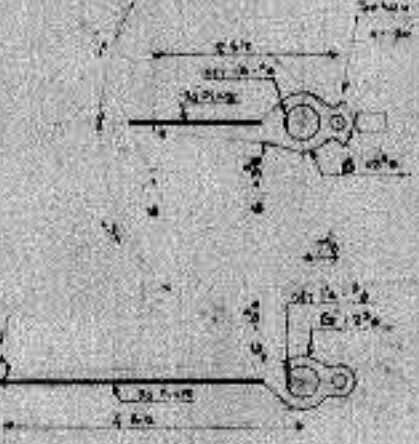
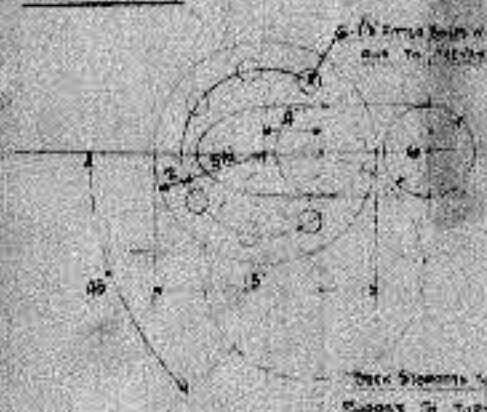
A = 43.55' = 43 FT 6 1/2"
 B = 25.4' = 25 FT 4"
 A x D = 115.95 126
 Speed = 13 Knots



DETAIL OF STUFFING BOX
 SCALE: 1/4" = 1 FOOT



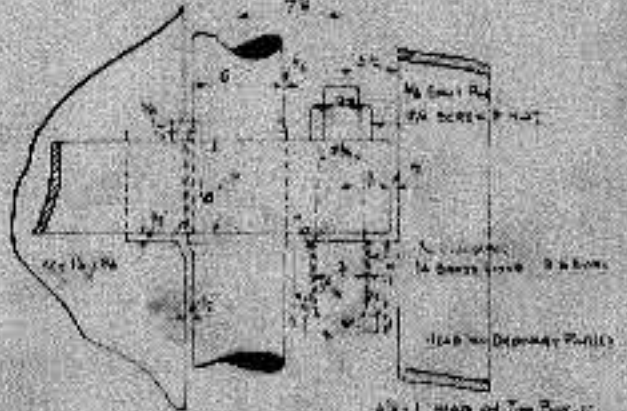
DETAIL OF SCARP
 SCALE: 3/4" = 1 FOOT



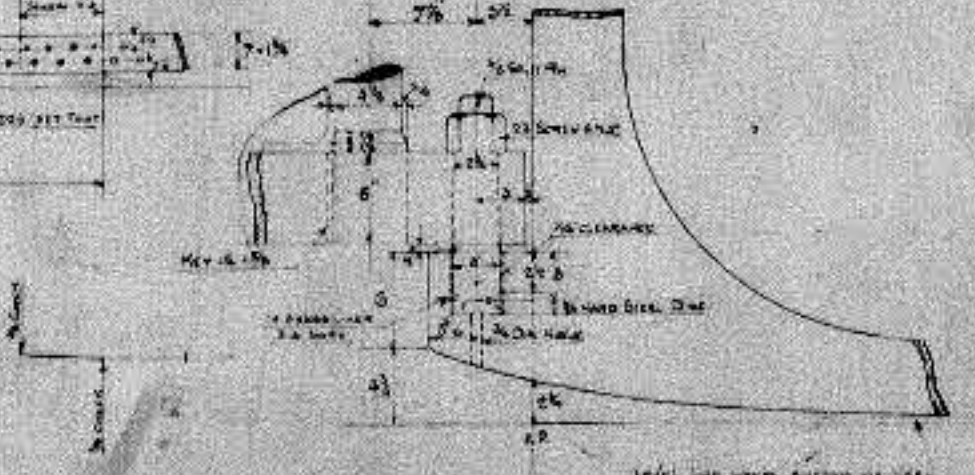
APPROVED

LOYDS REGISTER OF SHIPPING

SIGNED: J. MONTGOMERY 14. 8. 27.



DETAIL OF PINTLE
 SCALE: 1/4" = 1 FOOT



DETAIL OF BOTTOM PINTLE
 SCALE: 1/4" = 1 FOOT

JOHN OXLEY
 11

JOHN OXLEY