

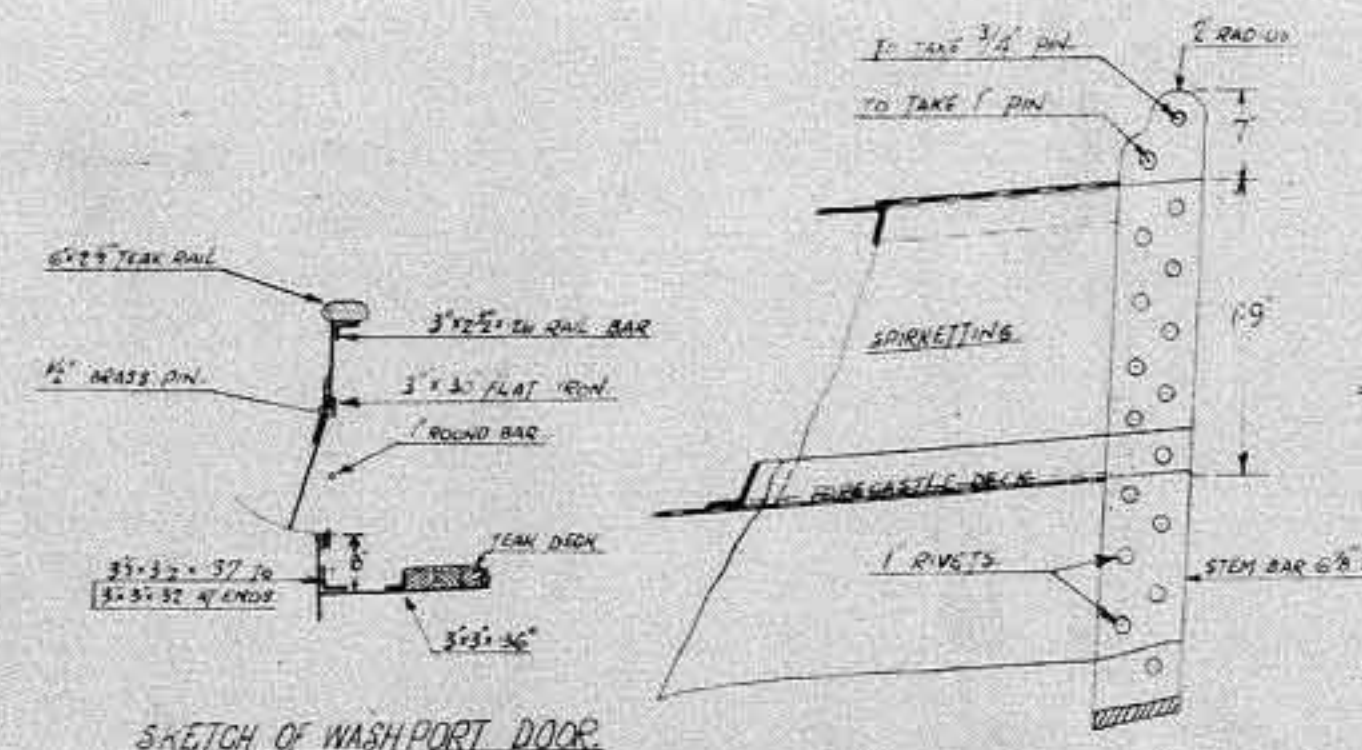
JOHN OXLEY.

INDENT N<sup>o</sup> 874 PILOT STEAMER FOR BRISBANE.

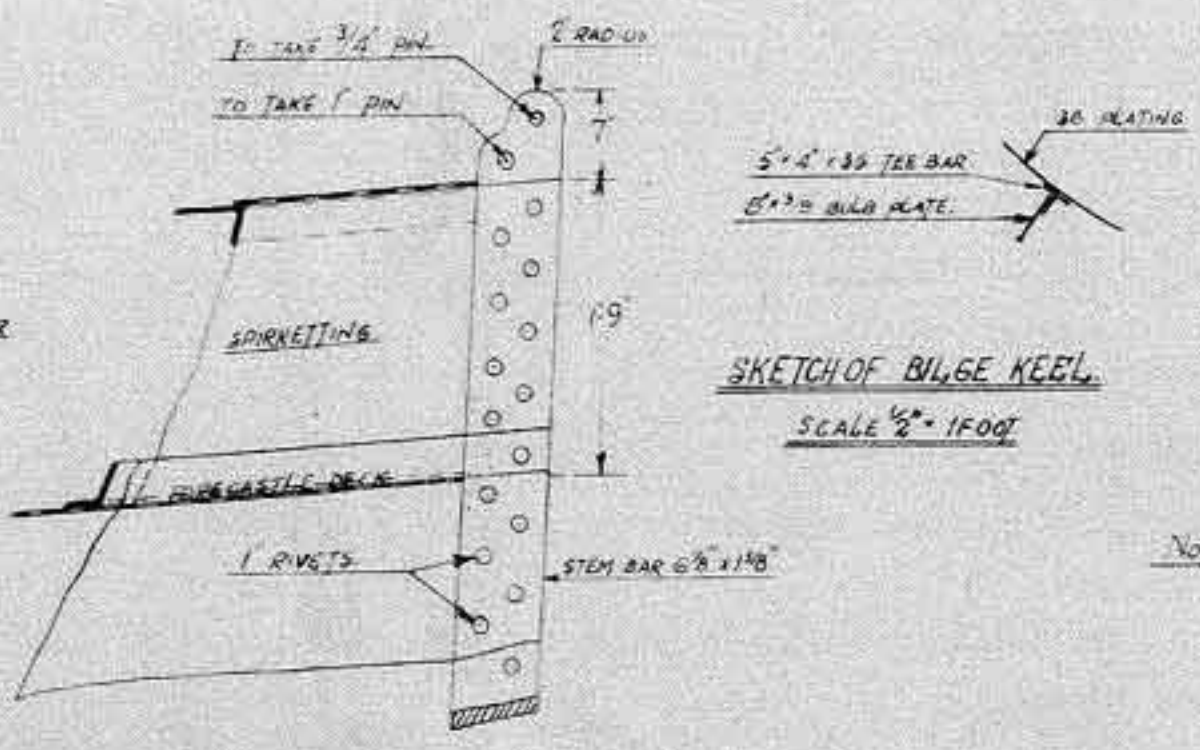
S.S. N<sup>o</sup> 464.

SHELL EXPANSION.

SCALE 1/4" = 1 FOOT.



SKETCH OF WASHPORT DOOR  
SCALE 1/2" = 1 FOOT



SKETCH OF STEM HEAD  
SCALE 1" = 1 FOOT

- # DENOTES S R BUTT LAP 2"
- # DENOTES DR BUTT LAP 5"
- || - T R 7"
- || BULWARK STAYS

NOTE - ALL SIDELIGHTS TO BE MARKED BY JOINER

**RIVETING.**

5/16\"/>

UPPER DECK STRINGER APPLIC TO SHELL SPACED 8\"/>

BRIDGE DECK STRINGER TO CANTAIN PLATE SPACED 8\"/>

BULWARK RAIL BAR TO BULWARK SPACED 7\"/>

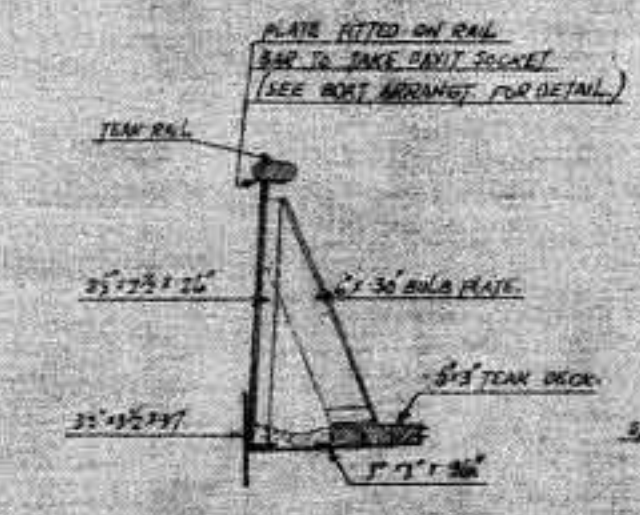
BULWARK SEAM TO SUPERSTRAKE SPACED 5\"/>

GAZEBARD PLATE TO BAR SHELL SPACED 5\"/>

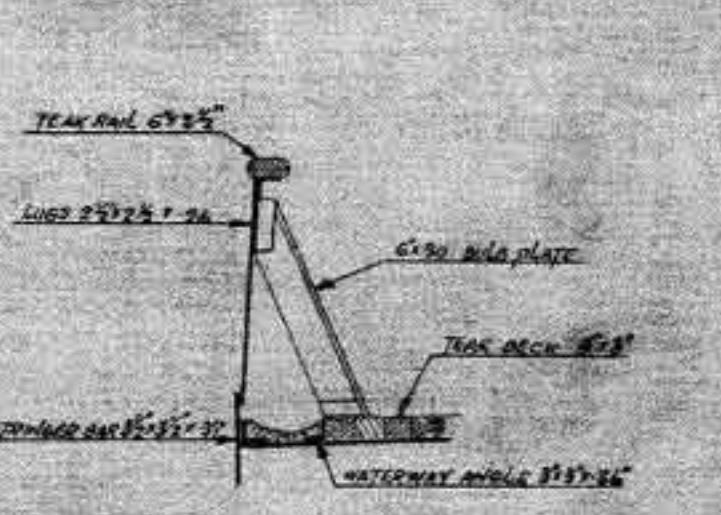
BULWARK BUTTS AND LANDINGS (EXCLUDING SUPERSTRAKE BEAMS) 3/8\"/>

BUTTS 4/8\" 5/8\" RIVETS.

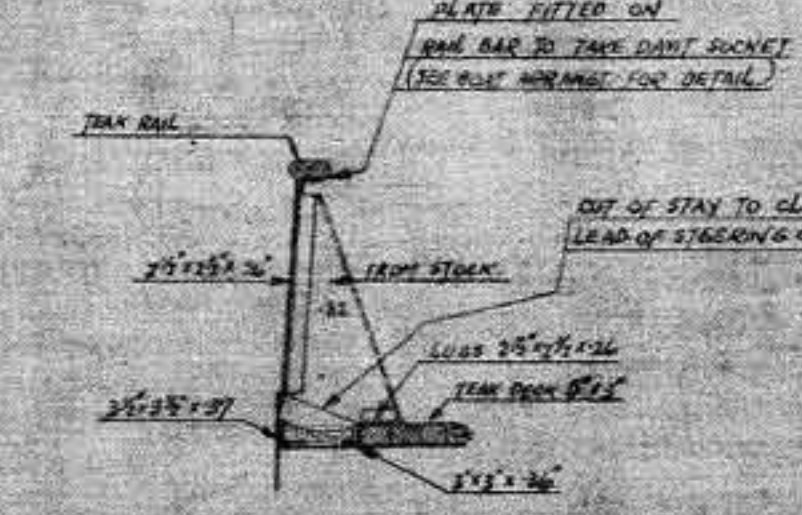
RIVETS THROUGH STEEL & SUPERSTRAKE TO BE DRILLED 1/8\" ABOVE THE LEVEL OF THE PLATING.



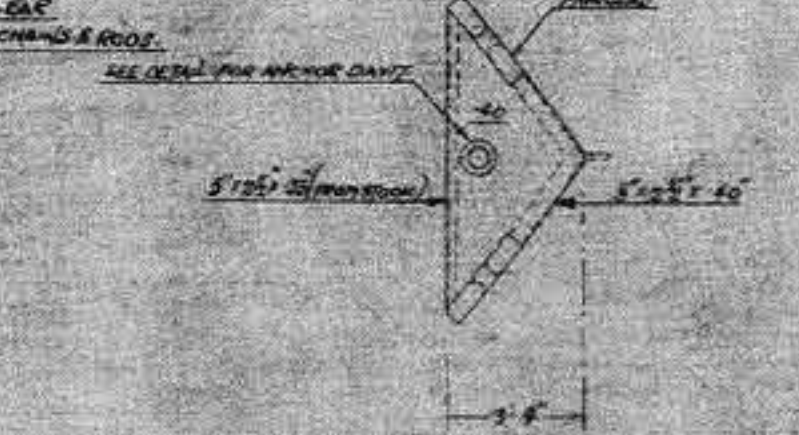
SKETCH OF BULWARK STAY (MARKED 2\"/>



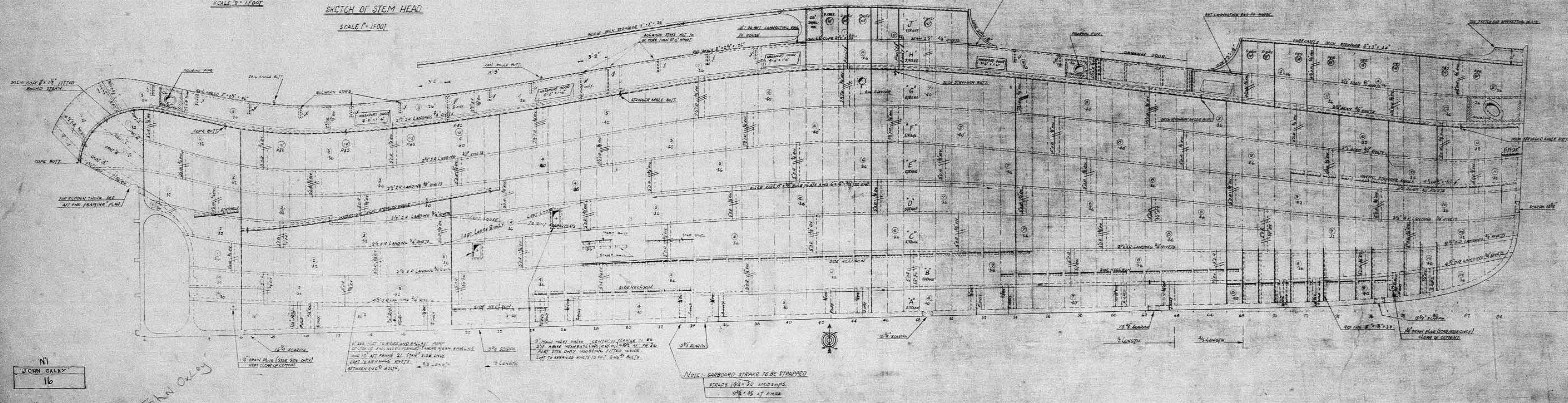
SKETCH OF BULWARK STAY (MARKED 3\"/>



SKETCH OF BULWARK STAY (MARKED 4\"/>



DETAIL OF SPRINLETTING PLATE  
SCALE 1/2" = 1 FOOT



NOTE - GAZEBARD STRAKES TO BE STRAPPED  
STRAPS 1 1/2\"/>

N1  
JOHN OXLEY  
16

John Oxley